

The Keelung Port Vessel Traffic Service Guideline

1. Purpose:

The purposes of this VTS manual are to enhance vessel traffic service of waterways, to ensure safety of navigation of vessels, to protect the marine environment of surrounding waters and to provide VTS users timely information and necessary assistance, within the limits of the VTS coverage.

2. Demarcation of Port Area:

- (1) Port limit: The waters and ratified land area bounded by a line connecting planned Taiwan Power Company Hsiehho Thermal Power Plant. And west breakwater, east breakwater, Tongpan Islet breakwater and Ba-Tz-Men Inspection Office to log basin breakwater, are defined as port area.
- (2) Inner harbor: The waters bounded by south of line connecting berth (25°8'42.2"N, 121°45'13"E) and An-Lan light beacon (25°8'45.4"N, 121°45'26"E) are defined as inner harbor.
- (3) Outer harbor: The waters bounded by inner side of a line connecting east (new) breakwater and west breakwater are defined as outer harbor excluding those waters designated as inner harbor, Cheng-bin area and Ba-Tz-Men area.
- (4) Cheng-Bin area: The waters bounded by west of Ho-Pin bridge (not included) and east of Ba-Tz-Men light beacon that turns 180° from true north are defined as Cheng-Bin area.
- (5) Ba-Tz-Men area: The waters bounded by a line connecting Ba-Tz-Men Inspection Office, log basin breakwater of Ba-Tz-Men and east of Ho-ping bridge (including) are defined as Ba-Tz-Men area.
- (6) Waimushan area: The waters bounded by a line connecting planned east breakwater, planned west breakwater and outer harbor are defined as Waimushan area.
- (7) Anchorage and Quarantine Anchorage: Eastern waters bounded by a line connecting east wave breaker light beacon (25°09'22.4"N, 121°45'25"E) and An-Lan light beacon (25°08'45.4"N, 121°45'26"E) are defined as quarantine anchorage.
 - a. West anchorage: The waters bounded by west of inbound channel and east of Yeh-liu Promontory.
 - b. East anchorage: The waters bounded by east of outbound channel and Keelung Islet to Shen-ao port.
 - c. The waters bounded by a line connecting referential points G, B, C and F in West anchorage at outside of the port are temporary reserved as "inbound

waiting anchorage" for merchant vessels (see Figure 2) so that they can enter and berth as soon as the berth is available.

(8) Prohibited-anchorage area:

- a. No vessels shall drop anchor or make a temporary stay at the inbound/outbound main channels, traffic separation waterways and separation zone.
- b. The waters bounded by a line connecting west breaker light beacon (25°9'18.8"N, 121°45'09.6"E) (Guan-Hwa Tower), Sian dong light beacon (25°8'42.2"N, 121°45'13"E) and those of coastlines are designated as "Keelung port prohibited-anchorage area" and no vessels shall drop anchor in this area.
- c. No vessels shall drop anchor or dredge the anchor within the sectoral waters 1350 meters radius from the center of the port (25°9'32.5"N, 121°45'14.6"E) where submarine cables are laid.

3. Inbound/Outbound Main Channels:

The waters of inbound/outbound main channels bounded between two lines, one line connecting (25°9'33.8"N, 121°45'19"E) and An-Lan light beacon (25°8'45.4"N, 121°45'26"E) and the other line connecting west breakwater light beacon (25°9'30.5"N, 121°45'09.1"E) and berth Sian dong light beacon (25°8'42.2"N, 121°45'13"E). The depth at the centerline of the main channel is 15.5 meters below zero tide level (Keelung port tidal datum). The width of main channel at port entrance is 275.61 meters and the width of inner harbor between berth Sian dong light beacon and An-Lan light beacon is 355 meters.

4. Traffic Separation Scheme (See Figure 2):

- (1) The waters bounded by a line connecting the following points (refer to Chart 0353 issued by Naval Meteorological and Oceanographic Office)

A-25°09'37.9"N 121°44'17.3"E B-25°11'02.5"N 121°42'19.6"E

C-25°12'50.5"N 121°42'52.7"E D-25°12'27.3"N 121°46'10"E

E-25°09'34.9"N 121°45'27.5"E F-25°12'31.4"N 121°44'15.7"E

G-25°10'06.6"N 121°44'41.5"E H-25°10'15.6"N 121°45'09.1"E

J-25°13'0.6"N 121°44'22.7"E K-25°11'0.1"N 121°44'44.5"E

W-25°12'31.5"N 121°44'40.9"E X-25°12'11.6"N 121°45'42"E

Y-25°10'16.2"N 121°45'04.2"E Z-25°10'8"N 121°45'34.5"E

- (2) All vessels approaching or departing port are required to follow the inbound/outbound directions of traffic channels.
- (3) Inbound/outbound waterways are both one-way traffic lane. All vessels operating in these channels shall maintain a safe distance with vessels ahead according to

maneuverability of own vessel.

- (4) Any anchoring or temporary stay is prohibited at inbound/outbound waterways.
- (5) Only one vessel at a time is allowed to operate and pass at port entrance.
- (6) Vessels allowed to enter the port shall follow the rules of International Regulations for Preventing Collisions at Sea, 1972 (amended 1989). Rule 10 (b)(iii), Traffic Separation Schemes, of chapter 2 states: normally join or leave a traffic lane at the termination of the lane, but when joining or leaving from the side shall do so at as small an angle to the general direction of traffic flow as practicable. Rule 10 (c) states: a vessel shall so far as practicable avoid crossing traffic lanes, but if obliged to do so shall cross as nearly as practicable at right angles to the general direction of traffic flow and with particular caution to giving the way to the vessel at waterway.

5. Geographic Position:

Keelung Harbor, a port born in nature surrounded by mountains with one side open to sea, is located at 25° 0.9' 10.1"N, 121° 45' 22.8"E, at the northeast of Formosa. Keelung Islet at the northeast and 2.5 nautical miles off the port entrance, is one of the best landmarks of the port. Ho-Ping Island is the largest island at the eastside of the port; Tongpan Islet, a plain low elevation island, and said VTS that directs the port traffic service is established thereupon. Total length of the berths in Keelung port is more than 9000 meters with 8000 meters in operation. The depth of the water is from 9 to 15 meters normally. Port area is about 608.4 hectares in total, 195.7 hectares for land area and 412.7 hectares for waters. Prevailing wind comes from northeast and north-northeast most of the time during September to May and comes from southwest and south during June to August; Northeast monsoon in the winter and southwest monsoon in the summer; every year from July to October as typhoon season; the precipitation is more in winter; fog occurs mostly in spring or summer (March to July); average range of the tide is about 0.73 meter.

6. Description of compulsory pilotage districts and pilot boarding and disembarkation areas for the Port of Keelung (See Figure 3):

- (1) Compulsory pilotage districts: The waters bounded by a line connecting coordinate point (25°9'18.9"N, 121°45'10"E), coordinate point (25°9'22.3"N, 121°45'24.7"E) and inbound side port area are defined as compulsory pilotage districts.
- (2) Pilot boarding areas:
 - a. S zone (for vessels less than 160 meters):
The waters bounded by a line connecting the following points A3 (25°10'57.8"N, 121°44'57.2"E), A4 (25°10'28.1"N, 121°45'2.6"E),

- A5 (25°10'24.5"N,121°44'38.4"E), A6 (25°10'54.2"N,121°44'33.1"E).
- b. M zone (for vessels more than 160 meters):
The waters bounded by a line connecting the following points A2 (25°11'57.2"N, 121°44'46.6"E), A3 (25°10'57.8"N, 121°44'57.2"E), A6 (25°10'54.2"N, 121°44'33.1"E), A7 (25°11'53.6"N, 121°44'22.5"E).
 - c. L zone (for large vessels including container ships with a GT (Gross Tonnage) exceeding 100,000, bulk carriers over 240 meters in length, 38 meters in width, and cruise vessels with a GT (Gross Tonnage) exceeding 150,000):
The waters bounded by a line connecting the following points A1 (25°12'24.6"N, 121°44'41.7"E), A2 (25°11'57.2"N, 121°44'46.6"E), A7 (25°11'53.6"N, 121°44'22.5"E), A8 (25°12'31.6"N, 121°44'15.7"E).
- (3) Pilot boarding areas under bad weather: The waters bounded by a line connecting the following points B1 (25°9'33.3"N, 121°45'18.8"E), B2 (25°9'22.3"N, 121°45'24.7"E), B3 (25°9'18.9"N, 121°45'10"E), B4 (25°9'30.3"N, 121°45'9.6"E).
 - (4) Pilot disembarkation areas: The waters bounded by a line connecting the following points C1 (25°10'3.4"N, 121°45'9.3"E), C2 (25°9'33.3"N, 121°45'18.8"E), C3 (25°9'22.3"N, 121°45'24.7"E), C4(25°9'18.9"N, 121°45'10"E), C5 (25°9'30.3"N, 121°45'9.6"E), C6 (25°10'0.3"N, 121°45'0.1"E).
 - (5) Pilot embarkation areas under bad weather: The waters bounded by a line connecting the following points D1 (25°9'13"N, 121°45'25.6"E), D2 (25°8'53.2"N, 121°45'27.2"E), D3 (25°8'50.7"N, 121°45'15.9"E), D4 (25°9'10.5"N, 121°45'14.3"E).
7. Vessel reporting:
- (1) Types of vessels required reporting:
Following vessels navigating, anchoring, operating within 20 nautical-mile radius of VTS area of Keelung Port must report to VTS concerning movement of vessel.:
 - a. For power-driven vessels with a gross tonnage exceeding 500.
 - b. For power-driven vessels 50 meters or more in length.
 - c. For towing or pushing ahead vessels with a total gross tonnage exceeding 500 or 50 meters or more in total length.
 - d. For passenger vessels regardless of gross tonnage or length.
 - (2) Contents of Reporting:
 - a. Upon Arrival: Passing at 20 nautical mile range of center of outer breakwater of port entrance.
 - b. Confirmation: Passing at 5 nautical mile range of center of outer breakwater of port entrance.
 - c. Applying entering or departing port.

- d. Anchoring or weighing-up.
 - e. Embarking/disembarking pilot the vessel (can be reported by pilot).
 - f. Shifting to new mooring or berthing position.
 - g. In case of incidence or emergency.
 - h. Information of Initial Report (on arrival at 20 nautical mile range of center of outer breakwater of port entrance):
 - i. Vessel's name, call sign and time passing through 20 nautical mile range.
 - ii. Position of reporting point.
 - iii. Course and speed.
 - iv. General description of dangerous cargo on board if any.
 - v. ETA of pilot boarding ground.
 - i. Information of Second Report (passing through 5 nautical mile range from the center of outer breakwater of port entrance):
 - i. Vessel's name, call sign and time passing through 5 nautical mile range.
 - ii. Position of reporting point.
 - iii. Ready to enter the port or anchoring.
8. Communications:
- (1) A VHF voice radio station "KEELUNG PORT RADIO" (KPR) has been set up under the VTS and maintains a continuous radiotelephone watch on VHF channels 12, 14, 16. Designated frequencies and functions are stated as follows:
 - a. VHF Channel 16 (156.8MHz) functions as international distress, emergency, reporting channel.
 - b. VHF Channel 14 (156.7MHz) functions as port traffic service channel for vessel reporting and Vessels/Shore communications.
 - c. VHF Channel 12 (156.6MHz) functions as backup channel and piloting communications
 - d. Shore Station/Call Sign: "KEELUNG PORT RADIO".
 - (2) Radiotelephone of port service network: Two "Vessel-Port" service frequencies: 141.010-144.040MHz and 141.070-141.100MHz, according to "Designated Radiotelephone Regulation", are frequencies for communications among VTS, pilot, tugboat, ferry and work boat.
 - (3) All Vessels/VTS communications must use VHF frequencies and must be in English mainly and in Mandarin secondly.
9. Service Provided by VTS:
- (1) VTS providing the mariner with information related to the safe navigation within 20 nautical miles VTS control area.
 - (2) Traffic conditions on the waterways such as weather, special circumstances,

dredging, navigational warnings etc.

- (3) Assistance to the occasional incidence of navigating vessels
- (4) The request of pilotage, firefighting boats (engines), and ambulance.
- (5) Incidence prevention, traffic condition of fairways, and notice to navigational warnings.

10. Traffic Monitoring:

- (1) VTS shall take serious cautions, such as vessels routing intentions of nearby waters and clearing the waterways, in monitoring vessels carrying dangerous goods, large passenger cruiser, special vessels and vessels with limited maneuverability.
- (2) VTS shall take necessary measures in order to mitigate the loss of lives and property for the vessels not under command or restricted in their ability to maneuver that will cause damages to the vessel traffic and environment of nearby waters.
- (3) All vessels navigating within 20 nautical miles of VTS area of Keelung Port shall maintain a continuous watch on VHF channel 14 and receive the instructions and safety information issued by VTS control center.
- (4) Vessels for dock/undock shall make report to VTS control center one hour prior to the operation by shipyard.

11. Port Control and Entering/Departing Permit:

(1) Merchant Ships:

The shipping company or ship's agent of vessels must comply with the provisions of articles 19, 20 of Merchant Port Law and articles 3,4,5,6 and 7 of Regulation for International Commercial Port Administration and submit entering/departing application form together with all necessary papers to Maritime Port Bureau. After approval, vessels must acquire berth assignment according to relevant rules prior to entering. Upon the completion of these formalities and entering/departing application, the vessels must submit the further application to VTS via VHF channel 14 prior to entering/departing the port. The vessels then can enter/depart port according to predetermined sequence as soon as the VTS control operator verifies the submitted data and issues the permission.

(2) Naval Ships:

- a. Same application procedures as merchant ships, that is, Enter/depart port must be permitted and sequenced by VTS. VTS shall grant high priority of entering/departing whenever encountering search and rescue, combat, and patient carrying missions.
- b. Any vessel navigate within 20 nautical miles control area of Keelung port must maintain continuous watch on VHF channel 14 so as to meet the communication needs in case of emergency.

- (3) Official Ships (Coast Guard cruise, Customs cruise, police boats, port service boats, and fishery official boats)
 - a. Verify the data whether it correct or not; Does the vessels comply with the rules and apply for the permit or exempt from every application.
 - b. Permit entering/departing port, notify to comply with the above regulation, and when leaving the berth, shall use VHF channel 14 to report to VTS and keep in touch.
- (4) Operation Ships:
 - a. Verify the data whether it correct or not; Does the vessels comply with the rules and apply for the permit or exempt from every application.
 - b. Dredger and Tug with towing length 50 meters or more must maintain continuous watch on VHF channel 14 and communicate with VTS at all times.

All entering/departing vessels shall record the time when passing through the center of outer breakwater as official time of entering/departing.

12. Regulations of pilotage operation.:

- (1) Keelung Port is approved as a compulsory pilotage area.
- (2) After securing permission from the VTS, vessels from open sea shall enter the outer quarantine anchorage without a pilot. However, if the captain wishes to have the pilot board at open sea, the owner or agent of the vessel shall request pilotage from the Keelung pilot to arrange the pilot boarding in pilot boarding areas. Prior to arrival, after reporting to VTS via VHF channel 14, vessels shall contact the pilot station via VHF channel 12 to confirm pilot boarding time. In some special circumstances such as bad weather (wave height more than 4 meters or wind speed more than 30 knots (average Beaufort 7)), the pilotage service will be suspended. The pilotage service will be resumed once the sea conditions become acceptable. During the suspension, if the captain considers navigation to be safe and manageable, and safety evaluation has been done by the pilot, then the captain shall enter the port at a safe speed under the pilot's instruction and take the pilot inside the breakwater.
- (3) When embarking/disembarking pilot, Vessels shall comply with the International Convention on Safety of Life at Sea (SOLAS) Chapter V, Rule 23 and rig the pilot ladder on lee side. Inside the turning basin, the vessel aligns with the outbound main channel and the pilot advises the vessel about the traffic conditions in/outside of the port, the proper heading and speed of the vessel, the pilot may leave the vessel with the consent of the captain. When the pilot disembark from the vessel, use VHF to report the time to the VTS.
- (4) For vessels carrying dangerous goods specified as 9 categories by SOLAS

requesting for pilotage, for safety reason, the pilot shall embark at 2 nautical miles from the outer side of breakwater. The agent of the vessel shall inform the pilot station about the said situation in advance.

- (5) The owner or agent of vessels shall request pilotage from the Keelung pilot station according to rules. They shall notify the vessel with time and position the pilot will embark as well as the information of pilotage. The pilot shall contact with the captain directly.
- (6) Following vessels are exempted from pilotage compulsory:
 - a. For vessels with R.O.C. nationality Naval ships, official boats, pilot boat, vessels of 1000 tons or less, ferry boats, yachts and other vessels approved by the authority.
 - b. Foreign vessels of 500 ton or less in gross.
- (7) Requesting of pilotage shall be filed 10 nautical miles from pilot boarding ground for entering vessels and 2 hours before for departing vessels.
- (8) Use telephone or VHF channel 12 to request pilotage.

13. Traffic Regulations That Vessels Comply with:

- (1) Waiting or approved entering/departing vessels
 - a. Vessels anchoring at outer anchorage must get the permission from the VTS beforehand.
 - b. Vessels permitted for entering shall take the pilot in M zone if they are more than 160 meters in length; S zone if they are less than 160 meters in length. Large vessels including container ships with a GT (Gross Tonnage) exceeding 100,000, bulk carriers more than 240 meters in length, 38 meters in width, and cruise vessels with a GT (Gross Tonnage) exceeding 150,000 shall take the pilot in L zone.
 - c. Departing vessels must wait at her berth or outer anchorage inside the breakwater. Navigating or proceeding to the port entrance area without permission is prohibited.
 - d. Vessels must apply for entering/departing port in advance, and when more than one ship is requesting entry or departure simultaneously, the priority will be determined by the KPR according to the situation.
 - e. With the exception of emergency, no vessels shall cast anchor in fairways, turning circle or other non-anchoring area. Report to VTS control center immediately in case of emergency.
 - f. Entering/ Departing vessels must navigate on the designated direction and designated waterway of traffic separation scheme.
- (2) Navigating for berthing after entering port:

- a. Vessels must not only comply with the rules of Convention of the International Regulations for Preventing Collisions at Sea 1972 but the provisions to navigation and collision avoidance provided in Merchant Port Law as well as in Regulations for International Commercial Port Administration.
- b. Vessels must navigate with safe speed after entering port area.
- c. Vessels must navigate as slow as practicable in the port. Side-by-Side, overtaking, or obstructing other vessel's movement are prohibited. While other vessels conducting diving, hydrographic, dredging, buoy fixing, and other surface and underwater operations, the vessels shall pass through it slowly at safety range specified.
- d. Small Vessels must not hamper the safety navigation of large vessels.

(3) Berthing:

- a. Vessels shall exhibit designated signs while engaging underwater operations. °
- b. Vessels shall maintain continuous watch on VHF channel 14 when disaster happened in the port area or during typhoon period. If incidence or emergency happened to the vessels, the vessels must not only take emergent measures but also report to VTS control center.
- c. 「 In order to keep maneuverability of vessel in case of emergency, the vessels must hold sufficient crew members on duty all the time. At least one third of crew members and one officer each responsible for deck and engine department respectively should be kept on board. More crew members shall be on alert when typhoon warning issued.

(4) Anchoring:

- a. Vessels shall anchor at the designated anchorage area. Anchoring at fairways and prohibited-anchorage area are prohibited.
- b. Vessels must report to and be permitted by VTS via VHF channel 14 one hour prior to entering anchorage for anchoring.
- c. Vessels shall report to VTS control center 10 minutes after drop anchor and 10 minutes before heaving up the anchor.
- d. Anchor watch shall be kept during the anchoring period, and maintain continuous watch on VHF channel 14.

14. Special Purpose Vessels:

- (1) The standard maximum measurements allowed at Port of Keelung are: GT (Gross Tonnage) less than 100,000 and draught less than 14 meters for container ships; length less than 240 meters and width less than 40 meters for bulk carriers; GT (Gross Tonnage) less than 150,000 for cruise vessels. If the vessel's GT (Gross

Tonnage), L.O.A (Length Over All) or extreme breadth exceeds the above restrictions, an application shall be submitted to the Port of Keelung, Taiwan International Ports Corporation, Ltd. two months (for container ships), one month (for bulk carriers), or half a year (for cruise ships) before the vessel arrives at the port for the first time. However, if the vessel's measurements (except for draft) exceed the above restrictions no more than 5%, an application shall be submitted to the Port Of Keelung, Taiwan International Ports Corporation, Ltd. two weeks before the vessel arrives at the port for the first time. For vessels (measurements within the above restrictions) with cargo that exceed the vessel's extreme breadth more than 40 meters, an application shall be submitted to the Port Of Keelung, Taiwan International Ports Corporation, Ltd. two weeks before the vessel arrives at the port for the first time.

- (2) For vessel engaged in towing where the length of tow exceeds 300 meters or the width of tow exceeds 45 meters shall report to the VTS center one hour in advance.
 - (3) For vessel engaged in speed measurement or compass adjustment within 20 nautical miles of VTS area of Keelung Port shall fly the International Code Flag "SM" or "QQ" and shall report to VTS center in advance.
 - (4) For vessel engaged in trial navigation within 20 nautical miles of VTS area of Keelung Port shall fly the International Signal Code Flag "RUI" in the daytime and shall exhibit three all-round white-green-red lights in a vertical line at night.
 - (5) For vessel carrying dangerous cargo engaged in navigating, berthing, anchoring, or operating shall exhibit red flag or red light to warn other vessels to keep well clear. Above categories of vessels shall maintain a listening watch on the designated VTS frequency, notify other vessels of own ship's route intention, take necessary action to prevent collision, and maintain navigational watch to ensure the safety of navigation.
15. Environmental Protection of Surrounding Waters:
- (1) According to the provisions of Marine Pollution Prevention Act, for vessels operating within Taiwan waters, excluding for those permitted to discharge to the ocean, all used engine oils, sewage, garbage, and other pollutants shall be kept on board or be discharged to disposal facility ashore.
 - (2) Report of incidents:

- a. Vessel's name, call sign and name, position of person making report.
 - b. Nature and cause of pollution.
 - c. Time and position of incident.
 - d. Types and characteristics of pollution.
 - e. Dimension and quantity of pollution.
 - f. Emergency communication measures such as telephone, fax etc....
16. Precautions of Fishing Boats Entering Port Area
- (1) The fishing vessel inbound/outbound Keelung port, except that approved by Port of Keelung, Taiwan International Ports Corporation, Ltd. (Avoid typhoons or celebrations, etc.), other vessel shall not enter the port and berth.
 - (2) If the fishing vessels have mechanical failure or emergency when inbound/outbound keelung port, shall use VHF14 or telephone (02-2462-7031) or Fishery Radio Station to contact VTS.
 - (3) The fishing vessel which navigate in main fairway of keelung port shall comply with the rules of Convention of the International Regulations for Preventing Collisions at Sea 1972, the provisions to navigation and collision avoidance provided in Merchant Port Law as well as in Regulations for International Commercial Port Administration.
17. Foreign Yachts Entering/Leaving Port:
- 24 hours prior to the arrival of port, foreign yachts shall authorize her agent to apply for port entry permit under the provisions of International Commercial Port Administrative Rules. The VTS control center, associated with the port police station and Keelung security inspection station of Coast Guard, will direct the berthing and conduct security inspection to the yacht.
18. Temporary Close of Port in Dense Fog (Dense fog always takes place from March to July):
- (1) A vessel exceed 200 meters in length, the standards of vessel stop entering and exiting:
 - a. Day time: Take VTS(25° 9' 35"N, 121° 45' 27.7"E) as the point, unable to see the red light beacon(25° 9' 33.8"N, 121° 45' 19"E) at the Keelung Port breakwater(The two places are about 500 meters apart).
 - b. At night: Take VTS as the point, unable to see the light of red light beacon.
 - (2) A vessel less than 200 meters in length, the standards of vessel stop entering and exiting:
 - a. Day time: Take VTS(25° 9' 35"N, 121° 45' 27.7"E) as the point, unable to see the east breakwater light beacon(25° 9' 33.7"N, 121° 45' 19"E) at the Keelung

Port breakwater(The two places are about 220 meters apart).

- b. At night: Take VTS as the point, unable to see the light of east breakwater light beacon.
- (3) When a momentary dense fog occurs, the ship's entry and exit actions shall be determined by the captain under the principle of safety.
- (4) Applying for a permit to leave the port during the thick fog:
The vessel shall comply with 「Regulations OF Keelung Port Prohibit Inbound And Outbound Due To Heavy Fog 」

19. During Air Raid:

(1) Arriving vessels:

- a. For vessels anchored at the anchorage or entering port shall weigh up the anchor or stop entering the port immediately and keeping the vessels off the waterways and proceed to open sea.
- b. For vessels entered and unmoored shall anchor at nearby designated anchorage and keep off the waterways if the situation is too emergent to leaving the port.

(2) Departing vessels:

- a. Vessels at berth, anchorage, dock or mooring at a buoy shall stay in her position if the anchor and lines still secured.
- b. Vessels shall anchor at nearby designated anchorage and keep off the waterways if the situation is too emergent to leaving the port and the anchor and lines not secured.

(3) Shifting berth vessels:

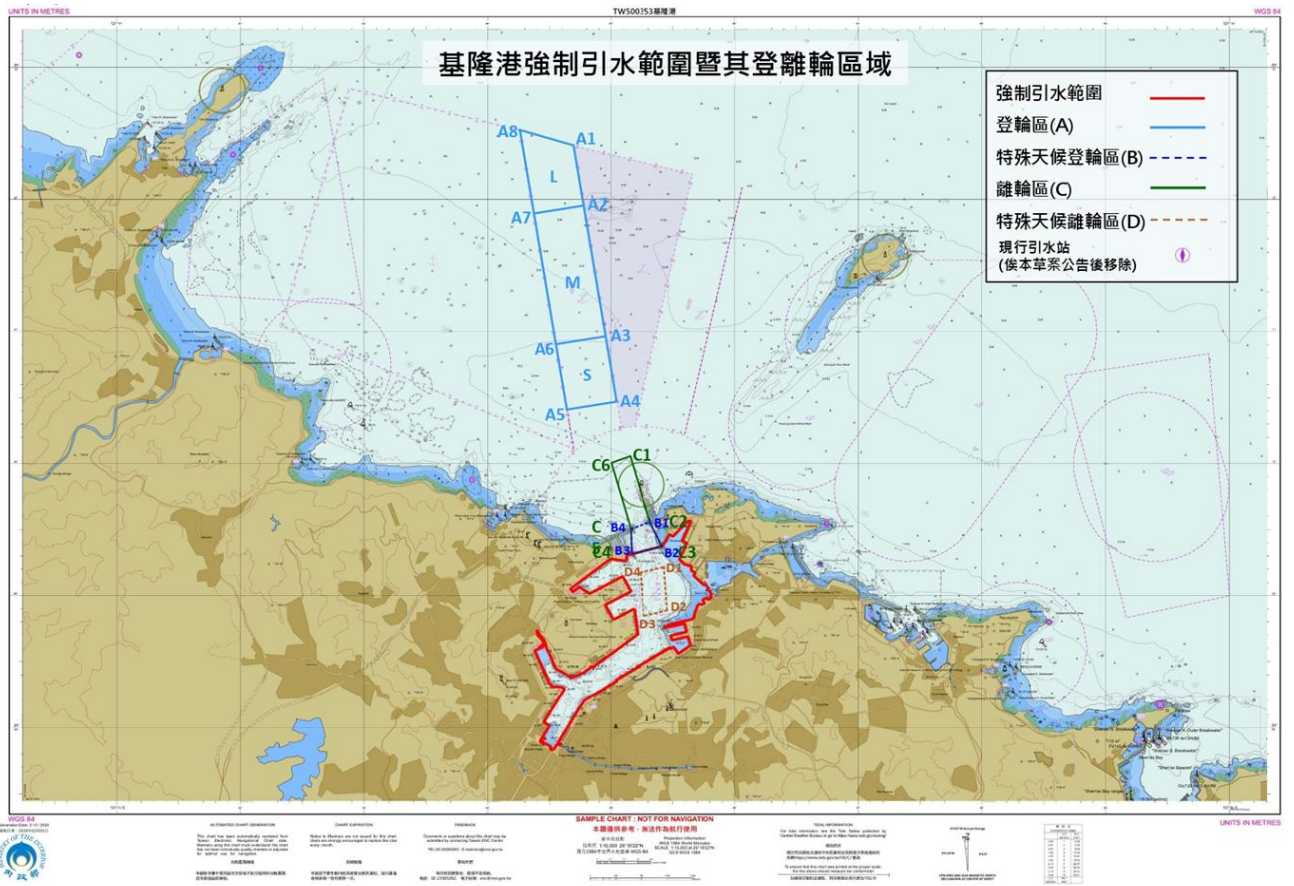
- a. Vessels shall stay in her position if the anchor and lines still secured.
- b. Vessels approaching or leaving the berth shall re-berthing to her original berth if applicable or anchor at nearby designated anchorage if not applicable.
- c. For vessels in shifting berth shall anchor at nearby designated anchorage and keep off the waterways if the situation is too emergent to shifting to designated position.

20. Foreign Vessels Transit Passage through Taiwan Territorial Sea

According to the laws and regulations of "Foreign Vessels Exercising the Right of Innocent Passage through Taiwan Territorial Sea", foreign vessels exercising innocent passage through Taiwan territorial sea shall comply with generally accepted international laws and regulations, procedures. In addition, follow the general procedures to report to VTS.

21. Operation and port management of Keelung Port belong to Port of Keelung, Taiwan

International Ports Corporation, Ltd. ; Administration and Supervision belong to
Maritime Port Bureau. MOTC.



(Figure 3)